

LOCAL VESSELS ADVISORY COMMITTEE

Adjustments of Passage Areas in Statutory Typhoon Shelters

Purpose

The paper aims to brief Members on the proposal of adjusting passage areas at statutory typhoon shelters for enhancement of fire safety.

Background

2. In recent years, fire incidents that spreading across vessels risked lives and caused serious property loss at sea.
3. Marine Department (MD), Fire Service Department (FSD), other relevant departments and local communities or organizations hold fire prevention campaigns in typhoon shelters and fire safety seminars for stakeholder in typhoon shelters on regular basis to enhance the public awareness of fire safety.
4. Apart from the fire prevention, MD has been working with FSD to explore ways to strengthen emergency preparedness in typhoon shelters, including reviewing the passage areas in the 14 statutory typhoon shelters, with a view to ensuring that fire boats are able to discharge their duties during emergency situations.

Proposal

5. The proposed adjustments to the passage areas aims to further enhance the fire safety within typhoon shelters by increasing the accessibility of fire boats in typhoon shelters so that fire boats are able to reach every corner in the typhoon shelters within the shortest possible time in the event of fire.
6. After detailed assessment by MD and FSD, adjustments to the passage areas of the following would be required -

- (i) Aberdeen South Typhoon Shelter (ABSTS);
- (ii) Hei Ling Chau Typhoon Shelter (HLCTS);
- (iii) Shau Kei Wan Typhoon Shelter (SKWTS);
- (iv) Tuen Mun Typhoon Shelter (TMTS); and
- (v) Kwun Tong Typhoon Shelter (KTTS).

7. The proposed adjustments to the passage areas are shown in **Annexes A to E**.

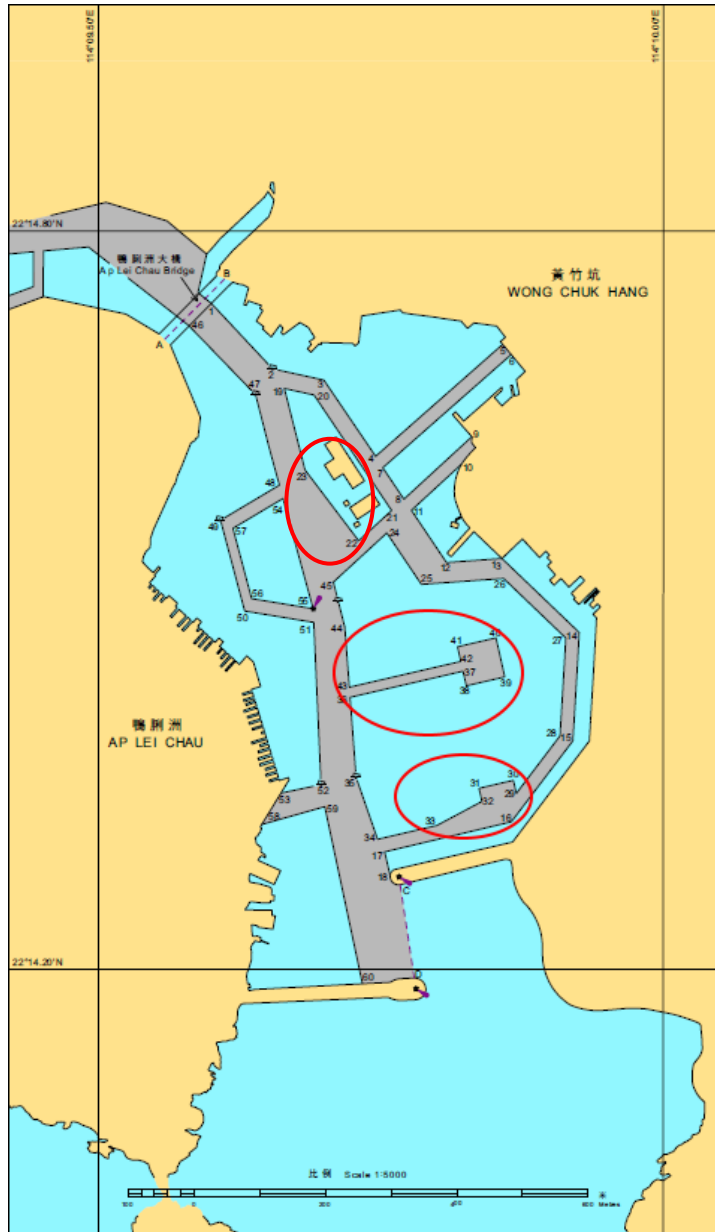
Way Forward

8. Members are invited to support the proposed adjustments to the passage areas stated in this paper. With Members' support, the proposed adjustments will be put in place in first quarter of 2023.

Planning and Services Division
Marine Department
December 2022

香港仔南避風塘
Aberdeen South Typhoon Shelter

建議的安排
Proposed Arrangement



現有的佈局
Existing Alignment

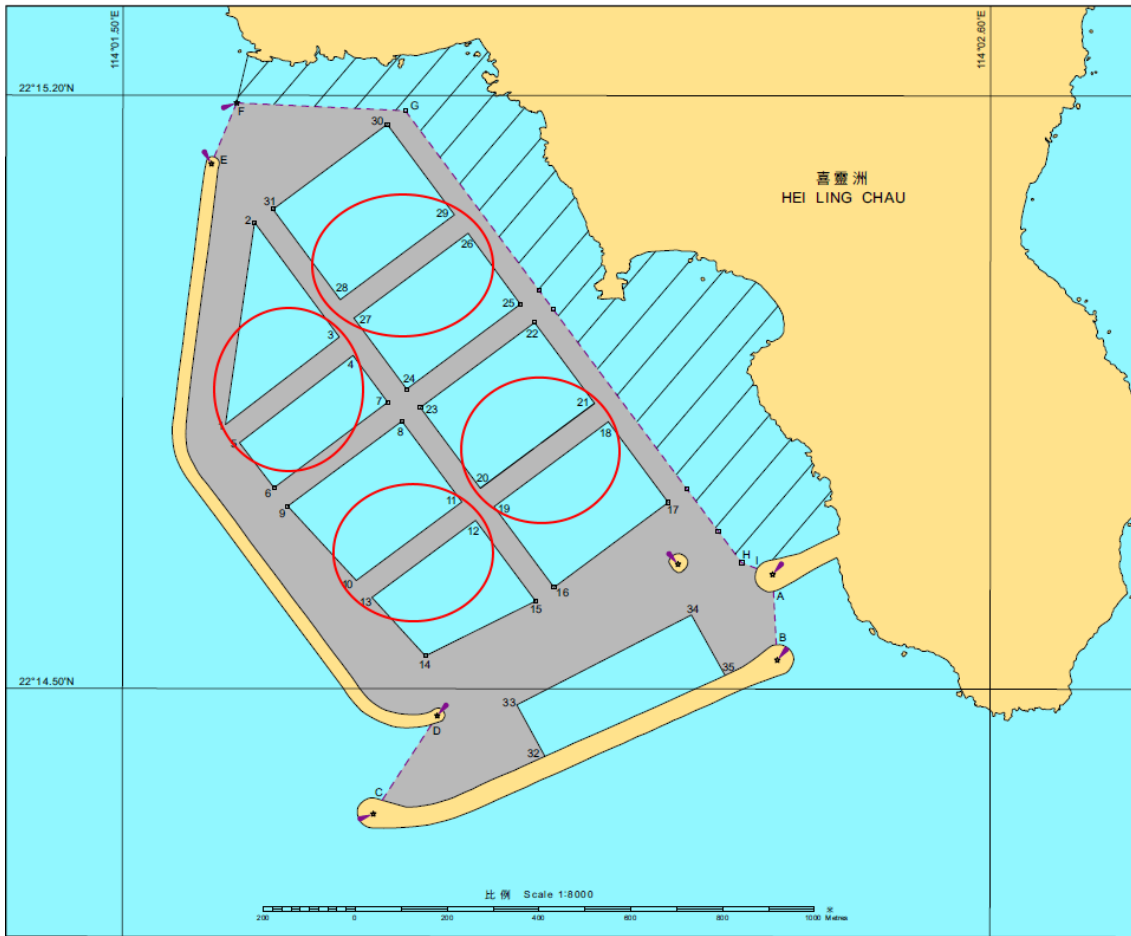


喜靈洲避風塘

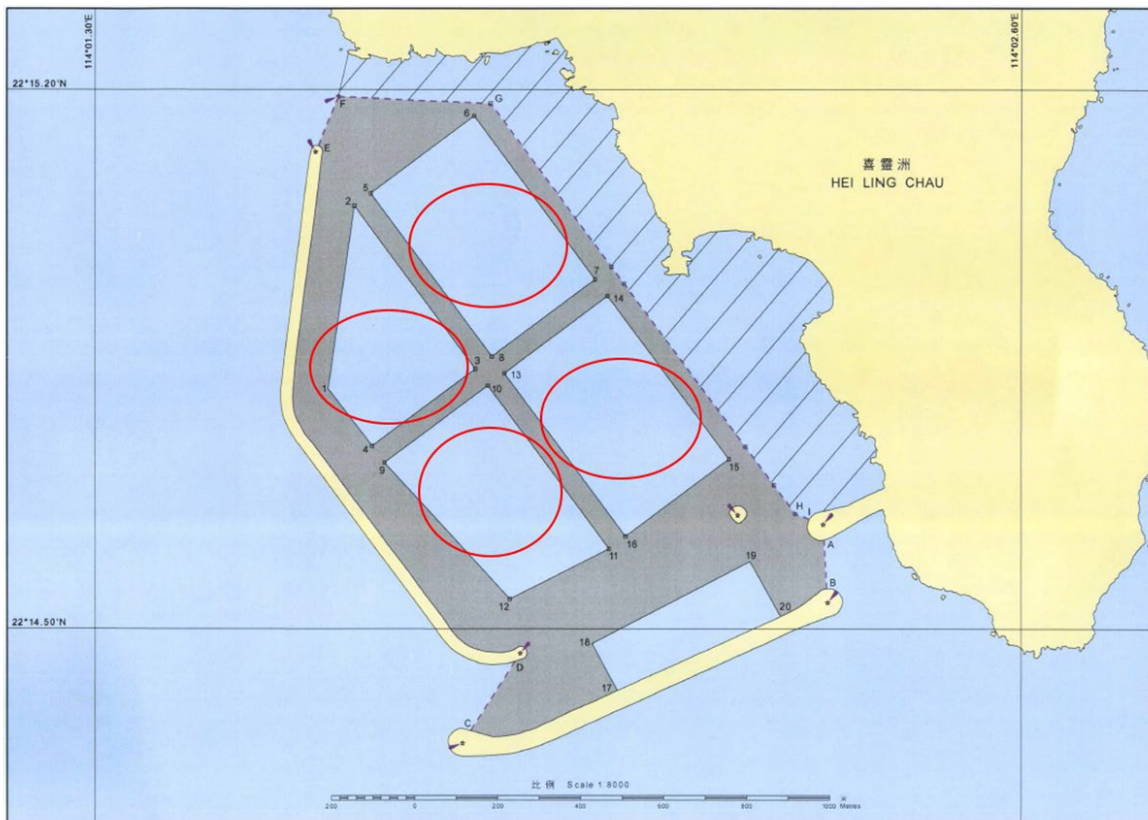
Hei Ling Chau Typhoon Shelter

建議的安排
Proposed Arrangement

附件 B
Annex B



現有的佈局
Existing Alignment

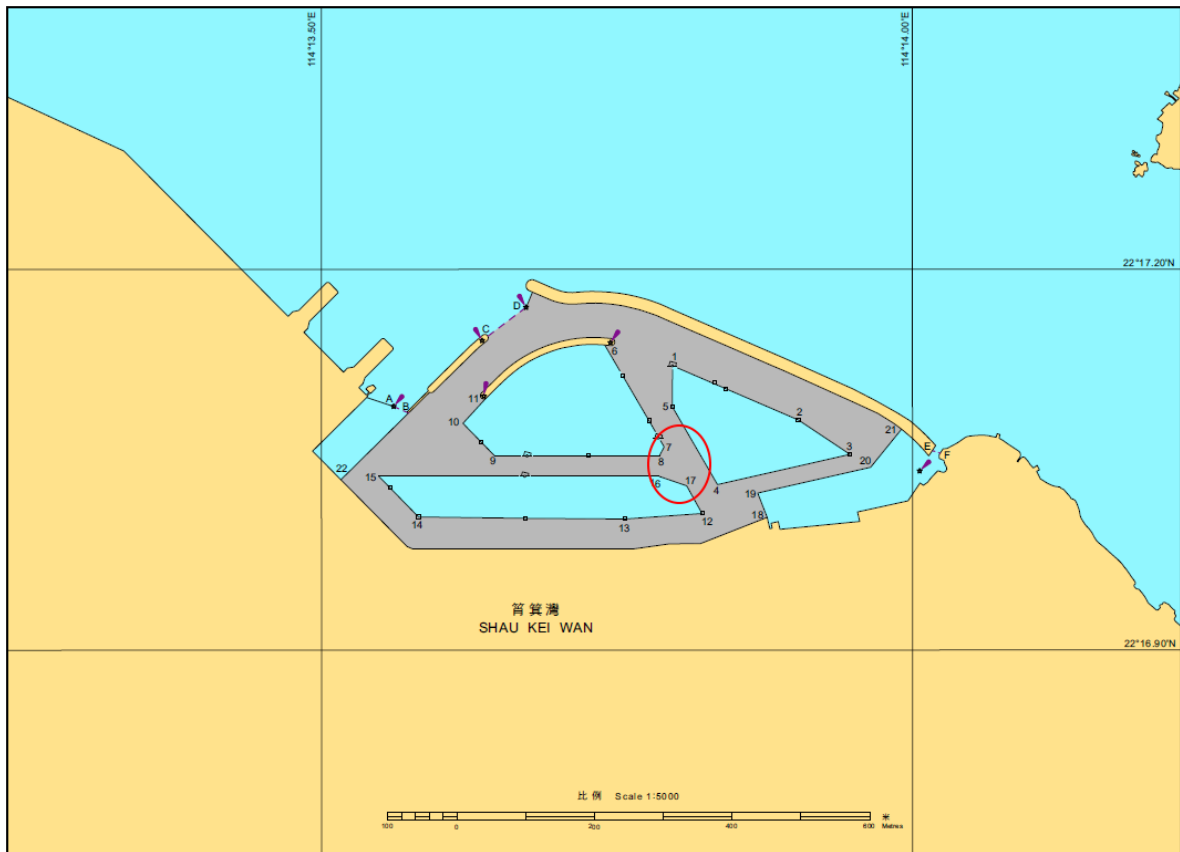


筲箕灣避風塘

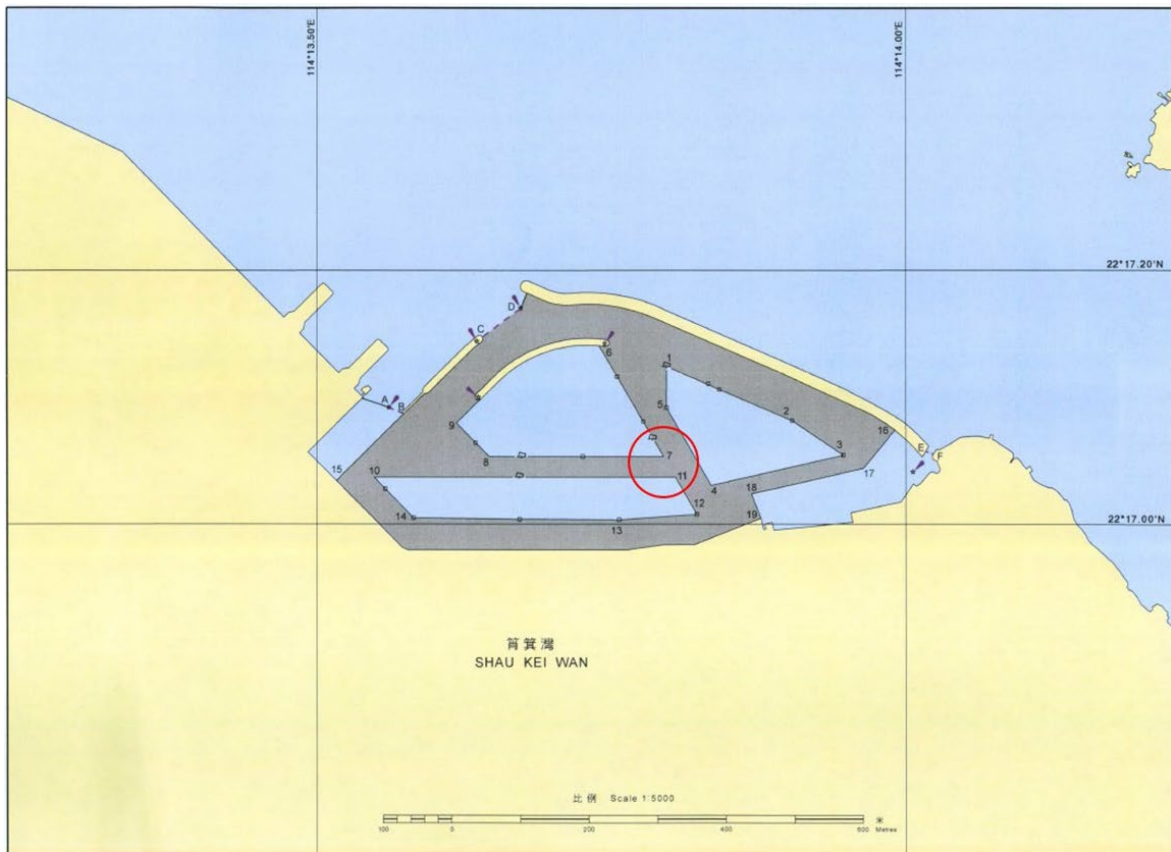
Shau Kei Wan Typhoon Shelter

附件 C
Annex C

建議的安排 Proposed Arrangement



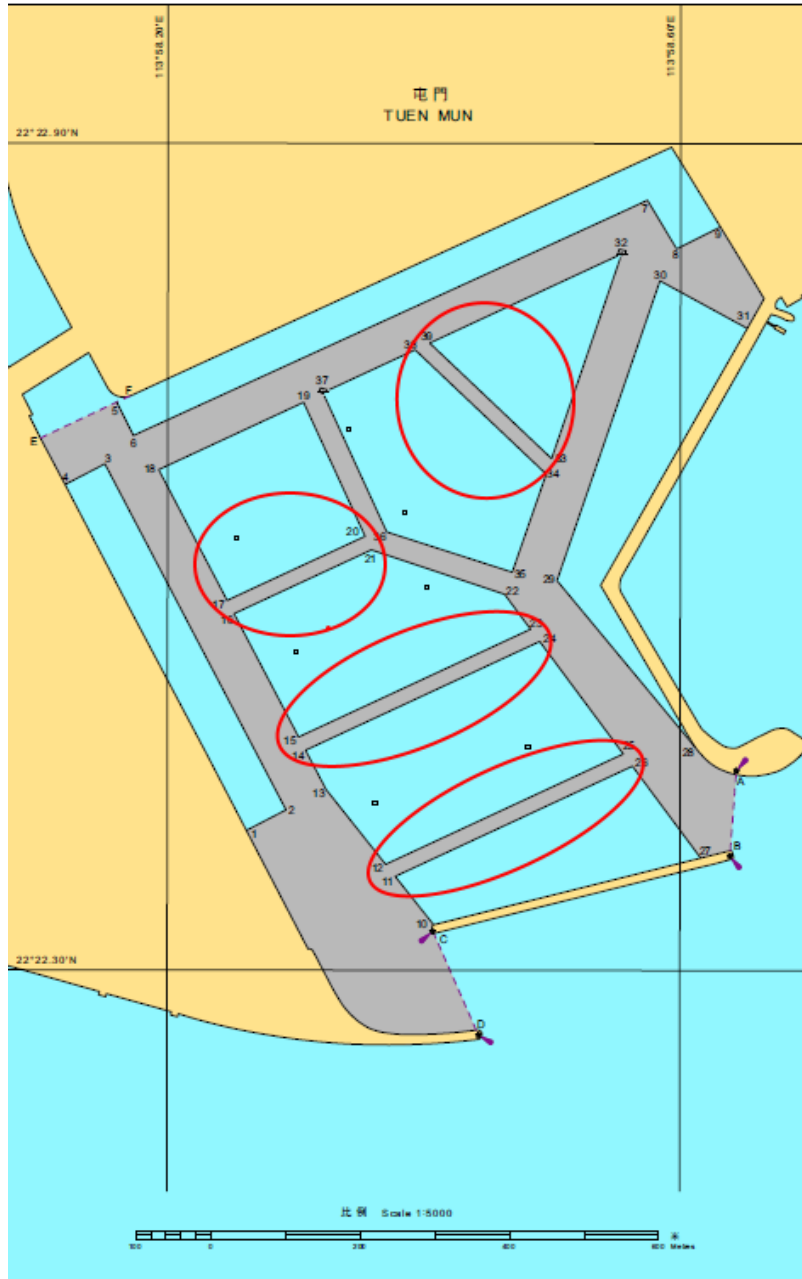
現有的佈局 Existing Alignment



屯門避風塘

Tuen Mun Typhoon Shelter

建議的安排
Proposed Arrangement



現有的佈局
Existing Alignment

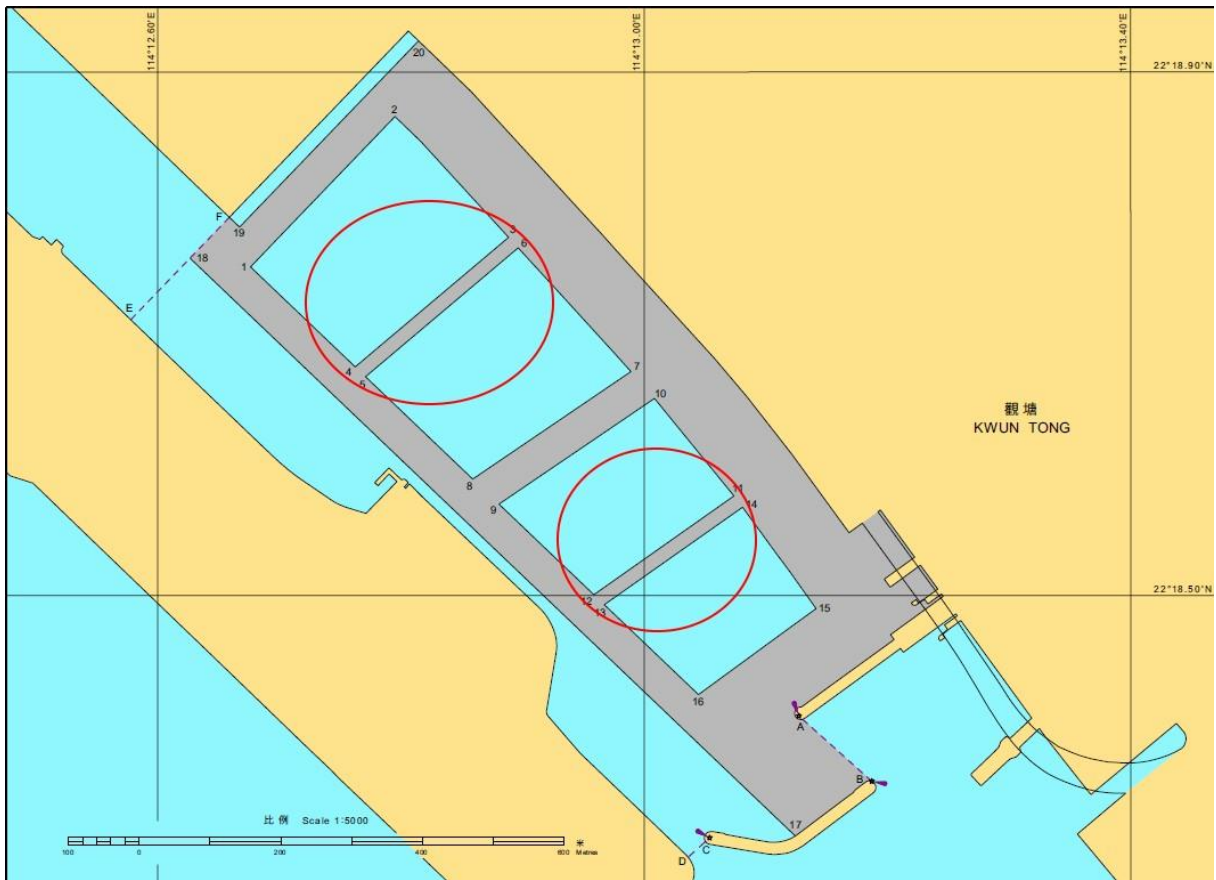


觀塘避風塘

Kwun Tong Typhoon Shelter

附件 E
Annex E

建議的佈局
Proposed Alignment



現有的佈局
Existing Alignment

