

**LOCAL VESSELS ADVISORY COMMITTEE (LVAC)  
PILOTAGE ADVISORY COMMITTEE (PAC)  
HIGH SPEED CRAFT CONSULTATIVE COMMITTEE (HSCCC)  
PORT OPERATIONS COMMITTEE (POC)**

**Amendments to the Fifth Schedule  
to the Shipping and Port Control Regulations (Cap. 313A)  
Hong Kong International Airport Approach Area No. 3 and No. 7**

**PURPOSE**

This paper is to update members on the proposed amendments to the existing restricted areas in the vicinity of Hong Kong International Airport (“HKIA”), hereunder being referred to as Hong Kong International Airport Approach Area (“HKIAAA”) No. 3 and No. 7, to align with the expansion of HKIA into a Three-Runway System (“3RS”) to safeguard aviation and marine safety through the control of vessel movements thereat. Details are set out in the **Annex** prepared by the Airport Authority Hong Kong.

2. Members are invited to submit your comments, if any, on the above proposal by replying to the Secretariat on or before 19.03.2021.

Marine Department

March 2021

**LOCAL VESSELS ADVISORY COMMITTEE (LVAC)**  
**PILOTAGE ADVISORY COMMITTEE (PAC)**  
**HIGH SPEED CRAFT CONSULTATIVE COMMITTEE (HSCCC)**  
**PORT OPERATIONS COMMITTEE (POC)**

**Amendments to the Fifth Schedule**  
**to the Shipping and Port Control Regulations (Cap. 313A)**  
**Hong Kong International Airport Approach Area No. 3 and No. 7**

**PURPOSE**

This paper is to update members on the proposed amendments to the existing restricted areas in the vicinity of Hong Kong International Airport (“HKIA”), hereunder being referred to as Hong Kong International Airport Approach Area (“HKIAAA”) No. 3 and No. 7, to align with the expansion of HKIA into a Three-Runway System (“3RS”)<sup>1</sup> to safeguard aviation and marine safety through the control of vessel movements thereat.

**BACKGROUND**

2. The movements of vessels in the vicinity of HKIA have to be controlled to ensure that the transmission of air navigation signal is free from interference by vessels, and that the flight paths concerned are clear of obstacles for the safe passage of aircrafts during landing and takeoff; hence safeguarding aviation and marine safety. Some waters in the vicinity of HKIA have therefore been designated as HKIAAA since 1998 to cater for the opening of HKIA. Currently, eight HKIAAA have been designated under Regulation 23 and paragraphs 5 to 12 of the Fifth Schedule to the Shipping and Port Control Regulations

---

<sup>1</sup> On 26 April 2016, the Chief Executive-in-Council granted the approval for the draft Chek Lap Kok Outline Zoning Plan, as well as the authorisation of the reclamation under the Foreshore and Sea-bed (Reclamations) Ordinance (Cap. 127) for the expansion of HKIA into a 3RS. Marine Department’s consultative committees, namely the Local Vessels Advisory Committee (LVAC), Pilotage Advisory Committee (PAC), High Speed Craft Consultative Committee (HSCCC) and Port Operations Committee (POC) were consulted on the preliminary layout of the expanded boundaries of HKIAAA No. 3 and No. 7 in 2012 and 2014.

(Cap. 313A), each with different restrictions<sup>2</sup>. Vessel operator with valid reason may apply for permission from the Director of Marine for entering or passing through HKIAAA. A map showing the current HKIAAA is at **Appendix A**.

3. To meet future air traffic demand and maintain Hong Kong's competitiveness as an international aviation hub, the Airport Authority Hong Kong ("AAHK") is expanding HKIA into a 3RS. The 3RS project comprises reclamation of about 650 hectares of land to the north of the existing Airport Island, and construction of a new runway ("the third runway") and associated facilities to support the 3RS operation (**Appendix B** refers). With this, part of the waters within the existing HKIAAA No. 3 and No. 7 at the northern part of HKIA would no longer exist after the completion of the reclamation works. Moreover, in order to upkeep the safety requirements as detailed in paragraph 2 above for the commissioning of the third runway scheduled for 2022 and the 3RS in 2024, the boundaries of HKIAAA No. 3 and No. 7 are required to be expanded accordingly. The expanded boundaries of HKIAAA No. 3 and No. 7<sup>3</sup> are reflected in the amendments as detailed in paragraph 6 below and illustrated in **Appendix C**.

#### Previous Consultation

4. Prior to the commencement of the construction of the 3RS project in 2016, marine stakeholders had been briefed on the significance of the 3RS and the preliminary layout of the expanded boundaries of HKIAAA (subsequently named as HKIAAA No. 3 and No. 7) at the workshops below:

- a. Marine Industry Consultation Workshops during 3RS master planning stage held in July 2012; and
- b. Marine Industry Consultation Workshops during 3RS scheme design stage held in June 2014.

---

<sup>2</sup> Except with the permission of the Director of Marine, no vessel shall enter or pass through HKIAAA No. 1, 2, 3 or 4; no vessel which has a height exceeding 15 metres above sea level shall enter or pass through HKIAAA No. 5 or 6; and no vessel which has a height exceeding 30 metres above sea level shall enter or pass through HKIAAA No. 7 or 8.

<sup>3</sup> The movement and navigation of local vessels will also be governed by the expanded boundaries of the HKIAAA concerned by virtue of Section 12 of the Merchant Shipping (Local Vessels) (General) Regulation (Cap. 548F).

Upon the proposed expansion of HKIAAA No. 3 and No. 7, a navigation waterspace of about 610m wide will be maintained between the northern boundary of HKIAAA No. 3 and the southern boundary of Sha Chau and Lung Kwu Chau Marine Park. Out of this 610m waterspace, there will be at least 450m wide of waterspace with at least 5m charted depth. **Appendix D** shows the aforesaid navigation widths and the charted depths. These are in line with the information presented in the afore-mentioned Marine Industry Consultation Workshops.

5. Relevant government bureaux/departments, including the Civil Aviation Department and Marine Department (MD), have been consulted and agreed to the expanded boundaries of the HKIAAA No. 3 and No. 7.

## PROPOSED DETAILED INSTRUCTIONS

6. The Fifth Schedule to Cap. 313A should be amended as follows:

- (i) Paragraph 7 of the Fifth Schedule to Cap. 313A specifying the boundary of the HKIAAA No. 3 should be replaced by the following:

The area of the waters of Hong Kong bounded by the shore and straight lines joining the following positions (a) to (f), (g) to (l) and (m) to (r)—

(a)	latitude	22° 18' 24"	north,
	longitude	113° 53' 47"	east;
(b)	latitude	22° 18' 06"	north,
	longitude	113° 52' 50"	east;
(c)	latitude	22° 18' 30"	north,
	longitude	113° 52' 40"	east;
(d)	latitude	22° 18' 40"	north,
	longitude	113° 53' 13"	east;
(e)	latitude	22° 19' 01"	north,
	longitude	113° 53' 41"	east;
(f)	latitude	22° 19' 08"	north,
	longitude	113° 54' 02"	east;
(g)	latitude	22° 19' 20"	north,
	longitude	113° 53' 56"	east;
(h)	latitude	22° 18' 48"	north,
	longitude	113° 52' 16"	east;
(i)	latitude	22° 19' 18"	north,

	longitude	113° 52' 06"	east;
(j)	latitude	22° 20' 26"	north,
	longitude	113° 55' 36"	east;
(k)	latitude	22° 19' 56"	north,
	longitude	113° 55' 47"	east;
(l)	latitude	22° 19' 48"	north,
	longitude	113° 55' 22"	east;
(m)	latitude	22° 19' 38"	north,
	longitude	113° 55' 38"	east;
(n)	latitude	22° 19' 39"	north,
	longitude	113° 56' 19"	east;
(o)	latitude	22° 19' 50"	north,
	longitude	113° 56' 51"	east;
(p)	latitude	22° 19' 36"	north,
	longitude	113° 56' 56"	east;
(q)	latitude	22° 19' 22"	north,
	longitude	113° 56' 51"	east;
(r)	latitude	22° 19' 20"	north,
	longitude	113° 56' 46"	east.

(ii) Paragraph 11 of the Fifth Schedule to Cap. 313A specifying the boundary of the HKIAAA No. 7 should be replaced by the following:

The area of the waters of Hong Kong bounded by the shore and straight lines joining the following positions (a) to (j), (k) to (m), and (n) to (o)—

(a)	latitude	22° 17' 15"	north,
	longitude	113° 53' 40"	east;
(b)	latitude	22° 16' 53"	north,
	longitude	113° 52' 32"	east;
(c)	latitude	22° 17' 55"	north,
	longitude	113° 52' 00"	east;
(d)	latitude	22° 18' 32"	north,
	longitude	113° 52' 00"	east;
(e)	latitude	22° 18' 34"	north,
	longitude	113° 52' 06"	east;
(f)	latitude	22° 19' 13"	north,
	longitude	113° 51' 52"	east;
(g)	latitude	22° 20' 30"	north,
	longitude	113° 55' 50"	east;
(h)	latitude	22° 19' 48"	north,

	longitude	113° 56' 06"	east;
(i)	latitude	22° 20' 10"	north,
	longitude	113° 57' 19"	east;
(j)	latitude	22° 19' 19"	north,
	longitude	113° 57' 38"	east;
(k)	latitude	22° 19' 07"	north,
	longitude	113° 57' 42"	east;
(l)	latitude	22° 18' 36"	north,
	longitude	113° 57' 54"	east;
(m)	latitude	22° 18' 08"	north,
	longitude	113° 56' 27"	east;
(n)	latitude	22° 17' 42"	north,
	longitude	113° 55' 04"	east;
(o)	latitude	22° 17' 31"	north,
	longitude	113° 54' 30"	east.

## PROGRAMME OF AMENDMENT

7. This proposed legislative amendments to the Fifth Schedule to Cap. 313A shall come into operation before the commissioning of the third runway which is scheduled for 2022.

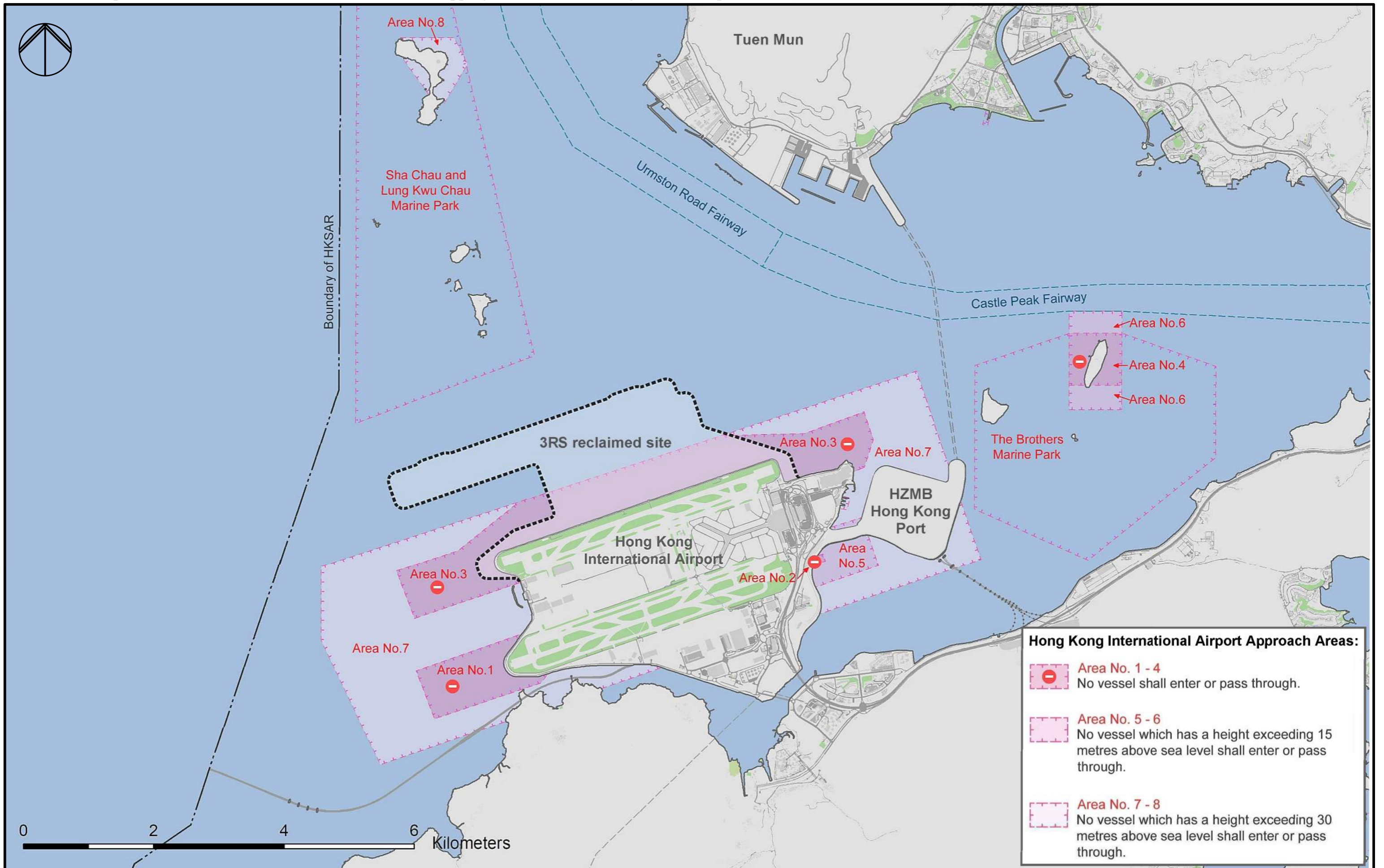
## ADVICE SOUGHT

8. Members are invited to note this paper. For enquiries, please contact Ms. Joanna WONG (Senior Project Engineer) / Ms. HUANG Yue (Project Engineer) of AAHK at telephone 2183 3859 / 2183 8194 respectively or Secretaries of MD's Committees (LVAC, PAC, HSCCC and POC) by emails below.

<b>MD Committees</b>	<b>Emails</b>
LVAC and PAC	committee_unit@mardep.gov.hk
HSCCC	gsykwok@mardep.gov.hk
POC	smo_psa@mardep.gov.hk

Airport Authority Hong Kong

March 2021



Rev.	Date	Description	Checked
A	29.01.2021	FORMAL SUBMISSION	K. LEUNG

Airport Authority  
 HKIA Tower, 1 Sky Plaza Road,  
 Hong Kong International Airport,  
 Lantau, Hong Kong.

Tel : (852) 2188 7111  
 Fax : (852) 2824 0717



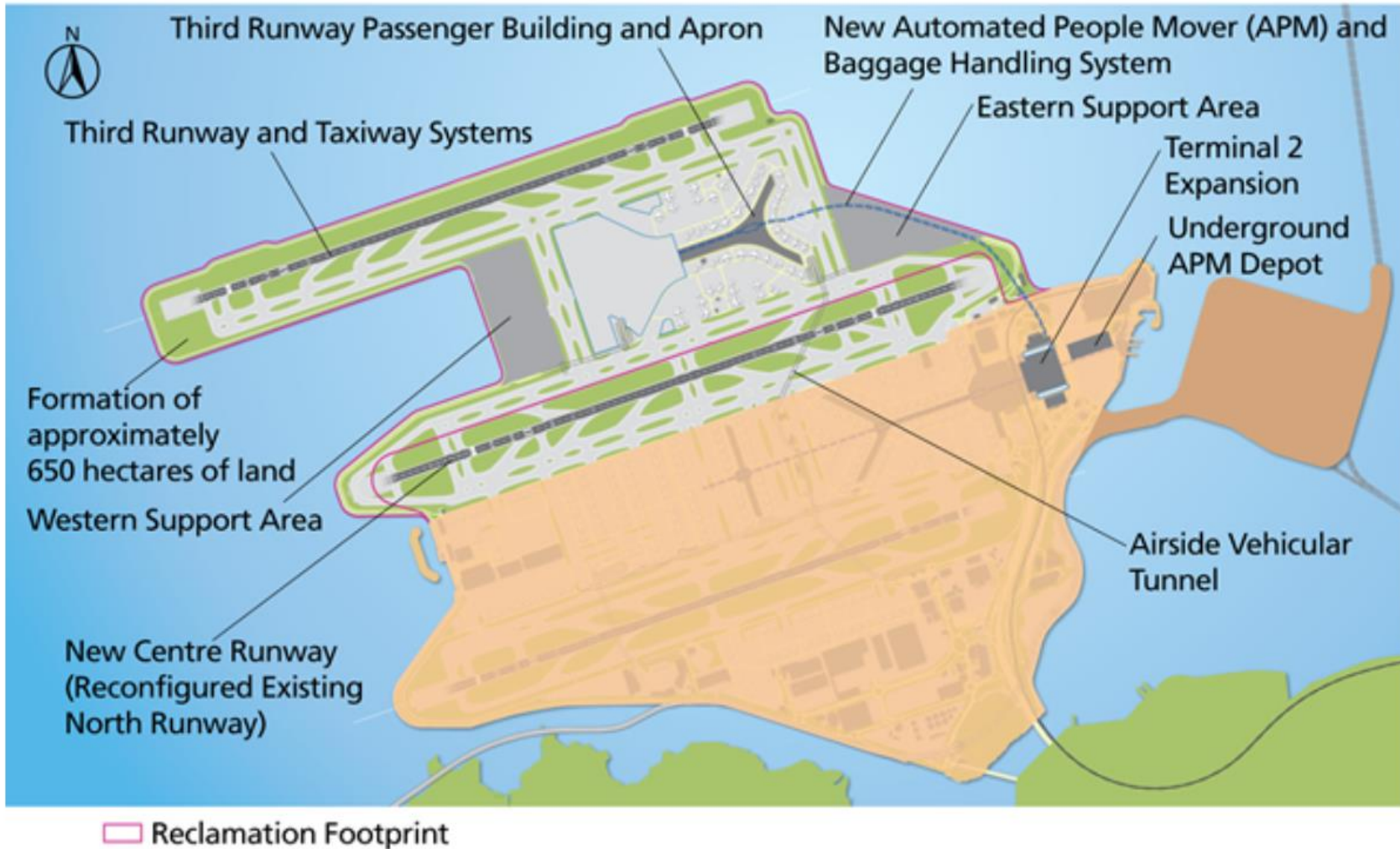
香港國際機場 HONG KONG INTERNATIONAL AIRPORT

Title  
 EXISTING HONG KONG INTERNATIONAL AIRPORT APPROACH AREAS

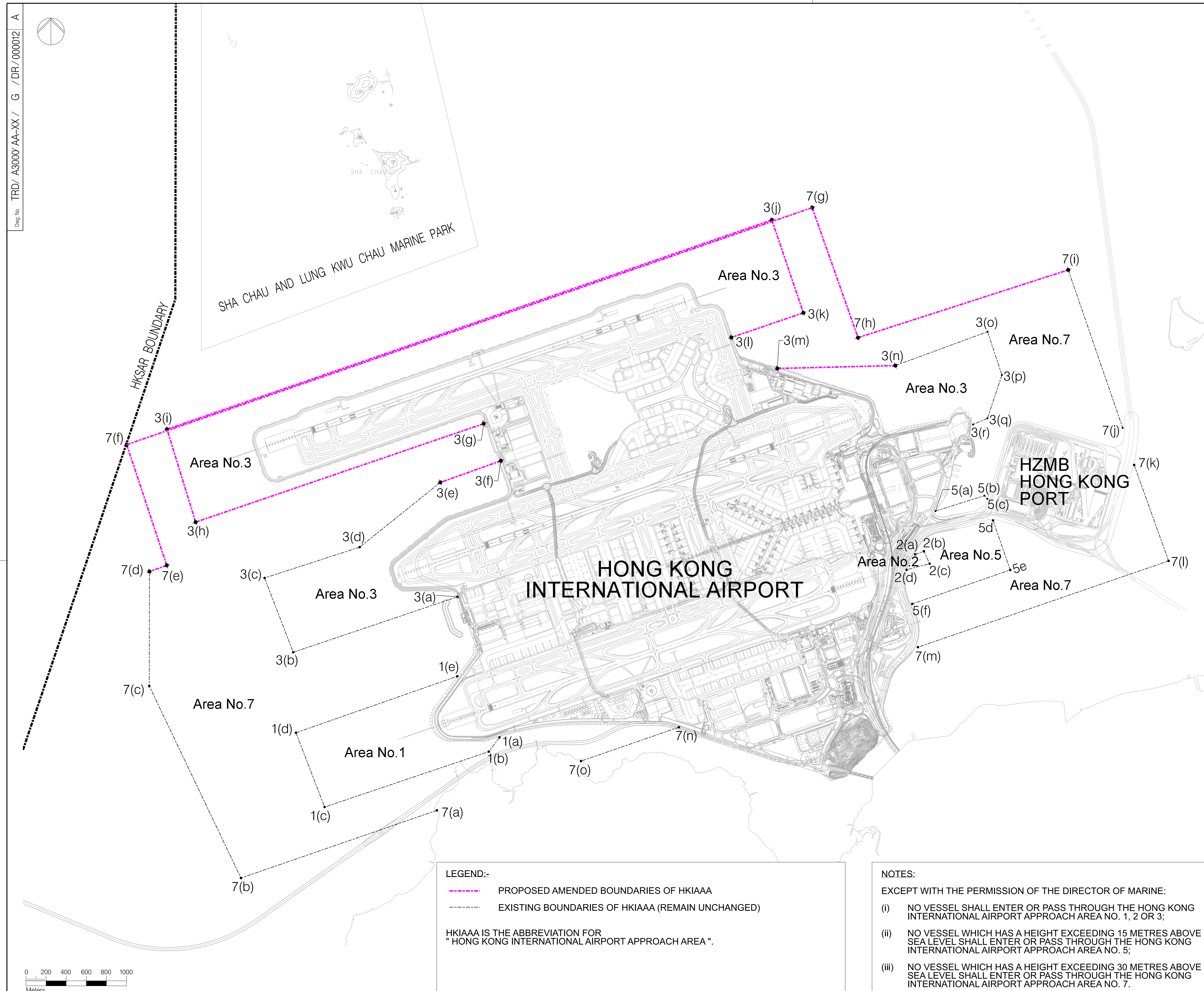
Signatures for Approval	Date
Design Supervisor : K. LEUNG	18.11.2020
Checkers : J. WONG	18.11.2020
Authorised Representative : P. LAU	18.11.2020

Hong Kong International Airport	
Drawing No. TRD /A3000 /AA-XX / G /DR /000014	
Scale N.T.S.	Rev. A

Appendix B – Three-Runway System Layout







**LEGEND:-**  
 - - - - - PROPOSED AMENDED BOUNDARIES OF HKIAAA  
 \_\_\_\_\_ EXISTING BOUNDARIES OF HKIAAA (REMAIN UNCHANGED)

HKIAAA IS THE ABBREVIATION FOR "HONG KONG INTERNATIONAL AIRPORT APPROACH AREA".

**NOTES:**  
 EXCEPT WITH THE PERMISSION OF THE DIRECTOR OF MARINE:  
 (i) NO VESSEL SHALL ENTER OR PASS THROUGH THE HONG KONG INTERNATIONAL AIRPORT APPROACH AREA NO. 1, 2 OR 3;  
 (ii) NO VESSEL WHICH HAS A HEIGHT EXCEEDING 15 METRES ABOVE SEA LEVEL SHALL ENTER OR PASS THROUGH THE HONG KONG INTERNATIONAL AIRPORT APPROACH AREA NO. 5;  
 (iii) NO VESSEL WHICH HAS A HEIGHT EXCEEDING 30 METRES ABOVE SEA LEVEL SHALL ENTER OR PASS THROUGH THE HONG KONG INTERNATIONAL AIRPORT APPROACH AREA NO. 7.

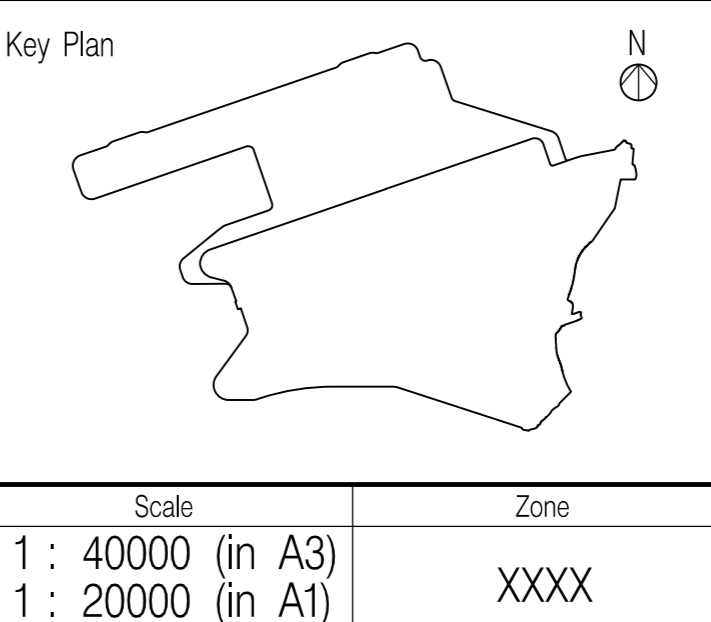
RESTRICTED AREAS IN THE FIFTH SCHEDULE OF THE SHIPPING AND PORT CONTROL REGULATIONS (CAP. 313A)				
HONG KONG INTERNATIONAL AIRPORT APPROACH AREA NO.	COORDINATES OF THE BOUNDARIES (REPRESENTED BY THE WGS 84)			RESTRICTIONS
3	THE AREA OF THE WATERS OF HONG KONG BOUNDED BY THE SHORE AND THE STRAIGHT LINES JOINING THE FOLLOWING POSITIONS (a) to (f), (g) to (l) and (m) to (r)--			
	(a)	latitude	22°18' 24" north,	NO AMENDMENT PROPOSED  EXCEPT WITH THE PERMISSION OF THE DIRECTOR OF MARINE, NO VESSEL SHALL ENTER OR PASS THROUGH.
		longitude	113°53' 47" east;	
	(b)	latitude	22°18' 06" north,	
		longitude	113°52' 50" east;	
	(c)	latitude	22°18' 30" north,	
		longitude	113°52' 40" east;	
	(d)	latitude	22°18' 40" north,	
		longitude	113°53' 13" east;	
	(e)	latitude	22°19' 01" north,	
		longitude	113°53' 41" east;	
	(f)	latitude	22°19' 08" north,	
		longitude	113°54' 02" east;	
	(g)	latitude	22°19' 20" north,	
		longitude	113°53' 56" east;	
	(h)	latitude	22°18' 48" north,	
		longitude	113°52' 16" east;	
	(i)	latitude	22°19' 18" north,	
	longitude	113°52' 06" east;		
(j)	latitude	22°20' 26" north,		
	longitude	113°55' 36" east;		
(k)	latitude	22°19' 56" north,		
	longitude	113°55' 47" east;		
(l)	latitude	22°19' 48" north,		
	longitude	113°55' 22" east;		
(m)	latitude	22°19' 38" north,		
	longitude	113°55' 38" east;		
(n)	latitude	22°19' 39" north,		
	longitude	113°56' 19" east;		
(o)	latitude	22°19' 50" north,	RENAMED FROM EXISTING POINTS 3(g) TO 3(k) FOLLOWING ALPHABETICAL ORDER. THE RELEVANT COORDINATES REMAIN UNCHANGED.	
	longitude	113°56' 51" east;		
(p)	latitude	22°19' 36" north,		
	longitude	113°56' 56" east;		
(q)	latitude	22°19' 22" north,		
	longitude	113°56' 51" east;		
(r)	latitude	22°19' 20" north,		
	longitude	113°56' 46" east;		
7	THE AREA OF THE WATERS OF HONG KONG BOUNDED BY THE SHORE AND STRAIGHT LINES JOINING THE FOLLOWING POSITIONS (a) to (j), (k) to (m), and (n) to (o)--			
	(a)	latitude	22°17' 15" north,	NO AMENDMENT PROPOSED  EXCEPT WITH THE PERMISSION OF THE DIRECTOR OF MARINE, NO VESSEL WHICH HAS A HEIGHT EXCEEDING 30 METRES ABOVE SEA LEVEL SHALL ENTER OR PASS THROUGH.
		longitude	113°53' 40" east;	
	(b)	latitude	22°16' 53" north,	
		longitude	113°52' 32" east;	
	(c)	latitude	22°17' 55" north,	
		longitude	113°52' 00" east;	
	(d)	latitude	22°18' 32" north,	
		longitude	113°52' 00" east;	
	(e)	latitude	22°18' 34" north,	
		longitude	113°52' 06" east;	
	(f)	latitude	22°19' 13" north,	
		longitude	113°51' 52" east;	
	(g)	latitude	22°20' 30" north,	
		longitude	113°55' 50" east;	
	(h)	latitude	22°19' 48" north,	
		longitude	113°56' 06" east;	
	(i)	latitude	22°20' 10" north,	
	longitude	113°57' 19" east;		
(j)	latitude	22°19' 19" north,		
	longitude	113°57' 38" east;		
(k)	latitude	22°19' 07" north,	RENAMED FROM EXISTING POINTS 7(e) TO 7(k) FOLLOWING ALPHABETICAL ORDER. THE RELEVANT COORDINATES REMAIN UNCHANGED.	
	longitude	113°57' 42" east;		
(l)	latitude	22°18' 36" north,		
	longitude	113°57' 54" east;		
(m)	latitude	22°18' 08" north,		
	longitude	113°56' 27" east;		
(n)	latitude	22°17' 42" north,		
	longitude	113°55' 04" east;		
(o)	latitude	22°17' 31" north,		
	longitude	113°54' 30" east;		

Notes:  
 1. Measurements are based on metric system.  
 2. All levels are in metres to Principal Datum (mPD) unless noted otherwise.  
 3. Do not scale drawing.  
 4. Figure dimensions are to be followed.  
 5. Do not use for construction unless expressly permitted.

Copyright in this document and all proprietary rights in the information it contains belong to the AA. It is a condition of the supply of this document, in whatever form, that the recipient shall hold it in confidence and shall not duplicate or otherwise reproduce it in whole or in part, nor disclose its contents without the written consent of the AA.

Rev.	Date	Description	Checked	Signatures for Approval	
A	29.01.2021	FORMAL SUBMISSION	Y. HUANG	Drawn	Date
				F. NG	05.10.2020
				Design	Date
				Y. HUANG	05.10.2020
				Checkers	Date
				Y. HUANG	05.10.2020
				Plot Date	29/01/2021
				Design Supervisor	Date
				J. WONG	05.10.2020
				Authorised Representative	Date
				P. LAU	05.10.2020

香港國際機場 HONG KONG INTERNATIONAL AIRPORT  
 Airport Authority HKIA Tower, 1 Sky Plaza Road, Hong Kong International Airport, Lantau, Hong Kong  
 Tel: (852) 2888 7111 Fax: (852) 2824 0717



Hong Kong International Airport

Title: Amendments to the Fifth Schedule to the Shipping and Port Control Regulations (Cap. 313A) - Hong Kong International Airport Approach Area No. 3 and No. 7

Originator	Design	Rel	Location	Discipline	Type	Number	Revision
TRD/A3000/AA-XX/	G	/DR/	000012	A			

Drawing No. TRD/A3000/AA-XX/ G /DR/ 000012 A

