

LOCAL VESSELS ADVISORY COMMITTEE

**Proposal to Realign the Eastern Quarantine Anchorage¹ (EQA)
in Kowloon Bay, Victoria Harbour**

Purpose

This paper seeks members' endorsement on the proposal to realign the Eastern Quarantine Anchorage (EQA) in Kowloon Bay, Victoria Harbour to facilitate the development of the Kai Tak Cruise Terminal. To provide adequate maneuvering water space for large modern cruise vessels berthing and unberthing at the Kai Tak Cruise Terminal, we propose a minor realignment of the EQA by amending the Seventh Schedule to the Shipping and Port Control Regulations (SAPCR), Cap 313A.

Background

2. The Government is committed to developing Hong Kong into a regional cruise hub and will ensure the necessary port infrastructural facilities are properly and timely provided to meet demand. To achieve this objective, the Government is taking forward a project to build a new cruise terminal at the former Kai Tak Runway, which can accommodate the new generation of the largest cruise vessels coming into operation in the next few years. It is expected that the first berth of this new cruise terminal will start operation in mid-2013.

3. The Kai Tak Cruise Terminal is designed to accommodate cruise ships with planning characteristics of up to 360 metres in length-overall with displacement of 220,000 tonnes in gross tonnage. To enable such large size cruise ships to safely berth and unberth at the new cruise terminal, there is a need to make a minor realignment of the EQA so as to provide adequate sea room for vessels to maneuver onto and off the berths of the Kai Tak Cruise Terminal generally, and after completion of the second berth in 2015 in particular.

¹ The name under the Seventh Schedule to the Shipping and Port Control Regulations (SAPCR), Cap 313A.

4. The EQA is currently located within Kowloon Bay immediately north of the Hung Hom Fairway occupying an area of around 37 hectares (ha). The facility is used for conducting both immigration and health clearances for vessels arriving at Hong Kong via Lei Yue Mun. In parallel with the above mentioned realignment of the EQA, the First Schedule to the Immigration (Anchorages and Landing Places) Order, Cap 115C concerning this anchorage (named Eastern Immigration Anchorage (EIA) under Cap 115C) will be amended by the Director of Immigration concurrently.

5. At present, the northeastern corner of the EQA is marked by the “PHE” (port health east) buoy at position (2’) of *Annex 2*. Upon realignment of the EQA, this buoy will be relocated to the northeastern corner of the realigned EQA at position (2) of *Annex 2*.

Annex 1

6. A drawing showing the existing EQA is at *Annex 1*, and a supplementary drawing showing the existing EQA and the proposed EQA for comparison is at *Annex 2*. The existing EQA and the realigned EQA are very similar in size.

Annex 2

Proposal

7. We propose amending the Seventh Schedule to the SAPCR to realign the EQA. We plan to implement the proposal after completion of the necessary legislative procedures, tentatively in December 2012. Regulation 72(1) of the SAPCR empowers the Director of Marine to amend the Seventh Schedule as proposed above by notice in the Gazette.

Configuration

8. The Seventh Schedule to the SAPCR is to be amended as follows:

Eastern Quarantine Anchorage (EQA)

Repeal points (i) to (vi) and substitute –

“(i) latitude 22° 18.258’ north,
longitude 114° 12.147’ east;

(ii) latitude 22° 18.258’ north,
longitude 114° 12.573’ east;

- (iii) latitude 22° 18.094' north,
longitude 114° 12.564' east;
- (iv) latitude 22° 17.975' north,
longitude 114° 12.434' east;
- (v) latitude 22° 17.975' north,
longitude 114° 12.147' east;
- (vi) latitude 22° 18.258' north,
longitude 114° 12.147' east.

Note: A reference to the co-ordinates of a point is a reference to the co-ordinates of that point based on the World Geodetic System 1984 (WGS 84).”

Legislative Amendment

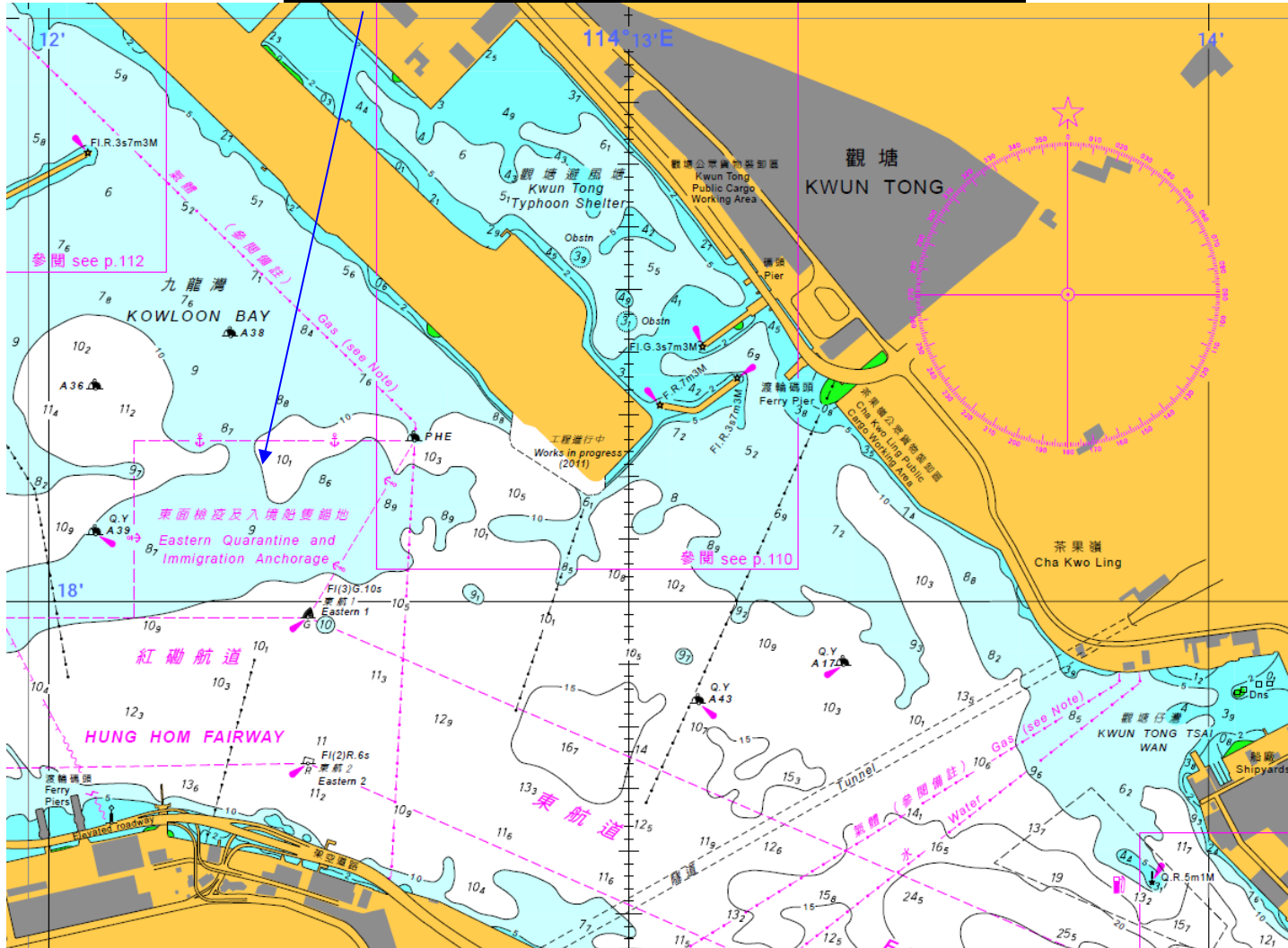
9. Subject to members' endorsement of the above proposal, action will be taken to amend the Seventh Schedule to the Shipping and Port Control Regulations (SAPCR), Cap 313A to realign the EQA.

Circulation

10. This paper is circulated to members for information and comments.

Planning, Development & Port Security Branch
Planning and Services Division
Marine Department
May 2012

The Existing Eastern Quarantine Anchorage (EQA)



The Existing Eastern Quarantine Anchorage (EQA) (bounded by blue lines) and Proposed Eastern Quarantine Anchorage (EQA) (bounded by red lines)

