

**Local Vessels Advisory Committee**  
**Pilotage Advisory Committee**  
**High Speed Craft Consultative Committee**  
**Port Operations Committee**

**Safety Zone and Marine Control Zone**  
**for the Hong Kong Offshore Liquefied Natural Gas Terminal**

**Purpose**

Members are invited to note the Annex containing a paper issued by the CLP Power Hong Kong Limited and The Hongkong Electric Company, Limited concerning the captioned matter.

Marine Department  
26 August 2022

**Safety Zone and Marine Control Zone**  
**for the Hong Kong Offshore Liquefied Natural Gas Terminal**

**Purpose**

Members are invited to note the details of the demarcation of two restricted zones, namely the Safety Zone (SZ) and the Marine Control Zone (MCZ), surrounding the Hong Kong Offshore Liquefied Natural Gas (HKOLNG) Terminal (the “Terminal”) to the east of Soko Islands.

**Background**

2. To enhance the stability and reliability of energy supply to Hong Kong and support the Hong Kong Special Administrative Region (HKSAR) Government’s carbon emissions reduction targets, the CLP Power Hong Kong Limited (CLP) and The Hongkong Electric Company, Limited (HKE) has established an offshore liquefied natural gas (LNG) terminal, with two subsea pipelines connecting the Terminal to the Black Point Power Station and Lamma Power Station respectively (refer to **Annex A**).

3. The Terminal is used for mooring the Floating Storage and Regasification Unit (FSRU) vessel and LNG carriers, and is located close to the southern boundary of the HKSAR waters to the east of Soko Islands. The Terminal commissioning is scheduled for early 2023.

**Delineation of SZ and MCZ**

4. The concept of having the control or restricted zones around an offshore LNG facility is an established industrial practice. The relevant international requirements as below are referenced:

- *EN-ISO-28460:2010 – Petroleum and Natural Gas Industries Installation and Equipment for LNG Ship-to-Shore Interface and Port Operations; and*
- *The Society of International Gas Tanker and Terminal Operators (SIGTTO) – Floating LNG Installations – 1st Edition 2021.*

5. Concerning the specific requirements for operations at the Terminal, justifications for the two restricted zones have considered the below references:

- Hong Kong's Risk Criteria, specifically the Individual Risk (IR) Criteria of  $1 \times 10^{-5}$ ;
- The Hong Kong adaptation of the *International Ship and Port Facility Security (ISPS) Code*; and
- Operational safety during berthing and unberthing of visiting LNG carriers.

6. Following the IR requirements, a 250m radius of SZ is to be established from the centre of the Terminal; and with the concern of operational safety, a MCZ of 500m extending from the annulus of the Terminal is to be implemented. (refer to **Annex B**)

### **Restrictions of SZ and MCZ**

7. For the SZ, no vessel other than those attending the Terminal facilities as authorized by the Operator of the HK Offshore LNG Terminal (HKOLT) shall enter into any part of the SZ.

8. For the MCZ, no vessel other than those as authorized by the Operator of the HKOLT shall enter into any part of the MCZ. Owners, Operators, Masters, Coxswains and Persons-in-charge of vessels requiring transit within the MCZ shall communicate with the Operator of the HKOLT and arrange pre-arrival arrangement.

9. The Owners, Operators, Masters, Coxswains and Persons-in-charge of all vessels navigating in the vicinity should not enter into the SZ and to keep

clear of the MCZ; besides, speed of all passing vessels should not exceed 10 knots whilst transiting in the vicinity.

### **Implementation of SZ and MCZ**

10. The locations of the SZ and MCZ will be charted on the navigation charts by the Hydrographic Office of the Marine Department. Besides, the information will be disseminated to mariners through Marine Department Notice and Notices to Mariners.

11. The Operator of the Terminal will arrange standby vessels for round-the-clock watch-keeping duties and establish communication mechanism with the relevant government departments. The SZ and MCZ will be implemented starting from 1 October 2022.

### **Advice Sought**

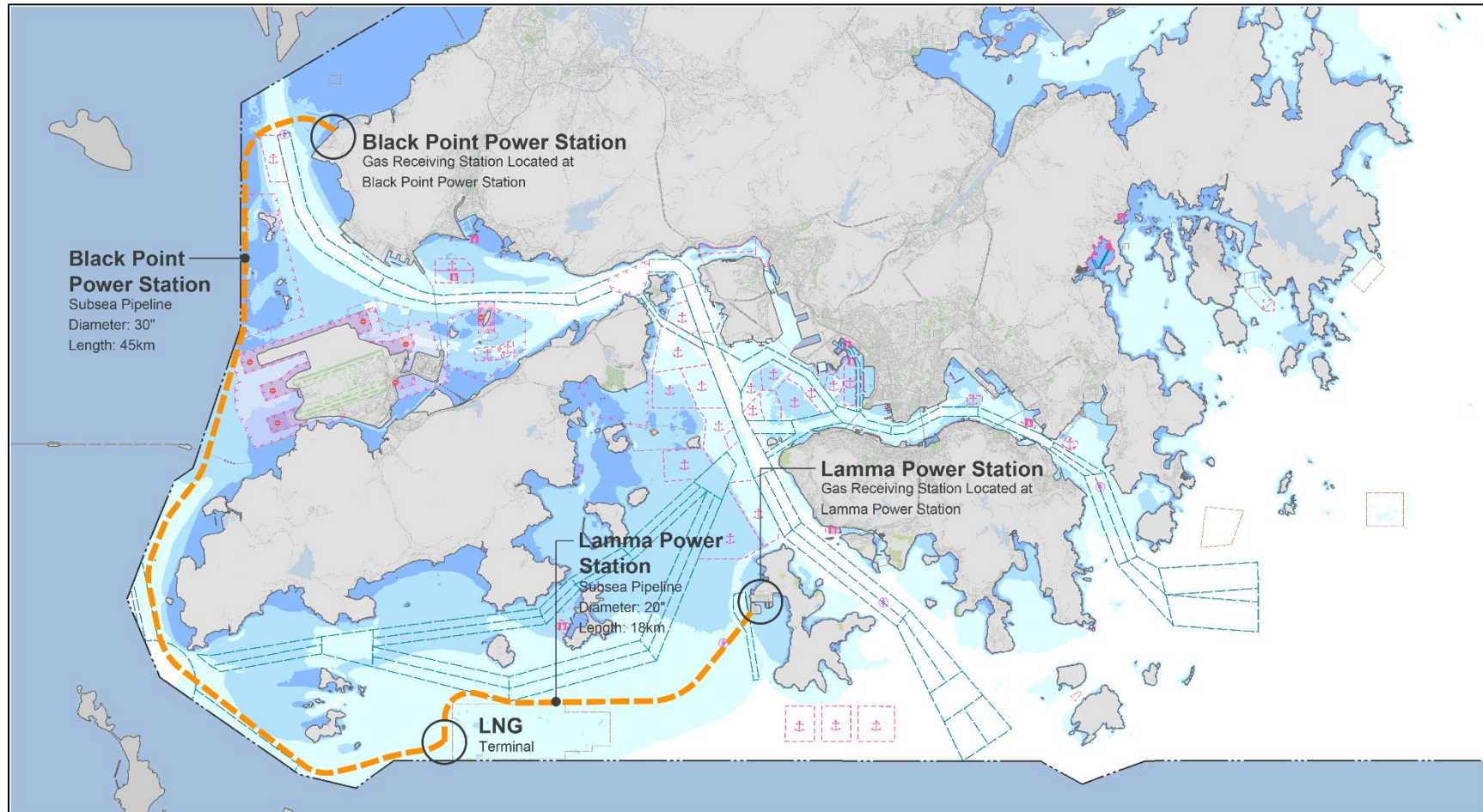
12. Members are invited to note the details of the restricted zones; and vessels concerned shall comply with the safety requirements of the SZ and MCZ as stated in this paper. In case of any enquiry on the related matters, please contact Mr. Timothy YIP of CLP by phone at 2596 4188 or 5206 2157, or by email: [timothy.yip@clp.com.hk](mailto:timothy.yip@clp.com.hk).

**CLP Power Hong Kong Limited**

**The Hongkong Electric Company, Limited**

**26 August 2022**

## Annex A – Location and Layout of the Project Infrastructure



# Annex B – Safety Zone and Marine Control Zone

